



Speke Resort
Munyonyo



SPEKE
RESORT
CONVENTION
CENTRE



MUNYONYO
COMMONWEALTH
RESORT LIMITED



SPEKE RESORT CONVENTION CENTRE UGANDA



COMPANY PROFILE

INDEX

1. Introduction
2. Resort Layout
4. Guest Rooms & Services
8. Food & Beverage
11. Meetings & Conferences
14. Speke Resort Convention Centre
18. Convention Centre - Meeting Rooms
 - Lower Ground Floor
 - First Floor
22. Convention Centre - Support Facilities
24. Seating Plans
30. Lesiure Facilites



ABOUT THE RESORT

INTRODUCTION

Speke Resort Munyonyo and Munyonyo Commonwealth Resort, Kampala's premium destination, located a mere 30 minutes drive from Entebbe International airport.

Spread across 100-acres, the lavish estate lies on the shores of Lake Victoria and stands as the definitive pinnacle to opulent living, state of the art conference centre, multi leisure ecotourism and a popular wedding destination with multicuisine restaurants and an array of leisure activities.

The 5 Star Resorts with over 20 years of experience represent a destination that can play host to exceptional and unique event. A Core focus of the resorts has always been the M.I.C.E markets. Boasting 34 multipurpose indoor venues including a Convention Hall, 3 grand ballrooms, 30 conference rooms and 9 outdoor spaces with opulent lake views, which can host up to 10,000 guests.

Comprising of 477 luxury guest rooms, including 59 Presidential Suites, the Resort is surrounded by sweeping and idyllic views over well-manicured landscaped gardens. With a blend of African culture and modern interior, each room creates a perfect atmosphere for a business or leisure travel.

Speke Resort Munyonyo and Munyonyo Commonwealth Resort have garnered several accolades over the years for the services offered.

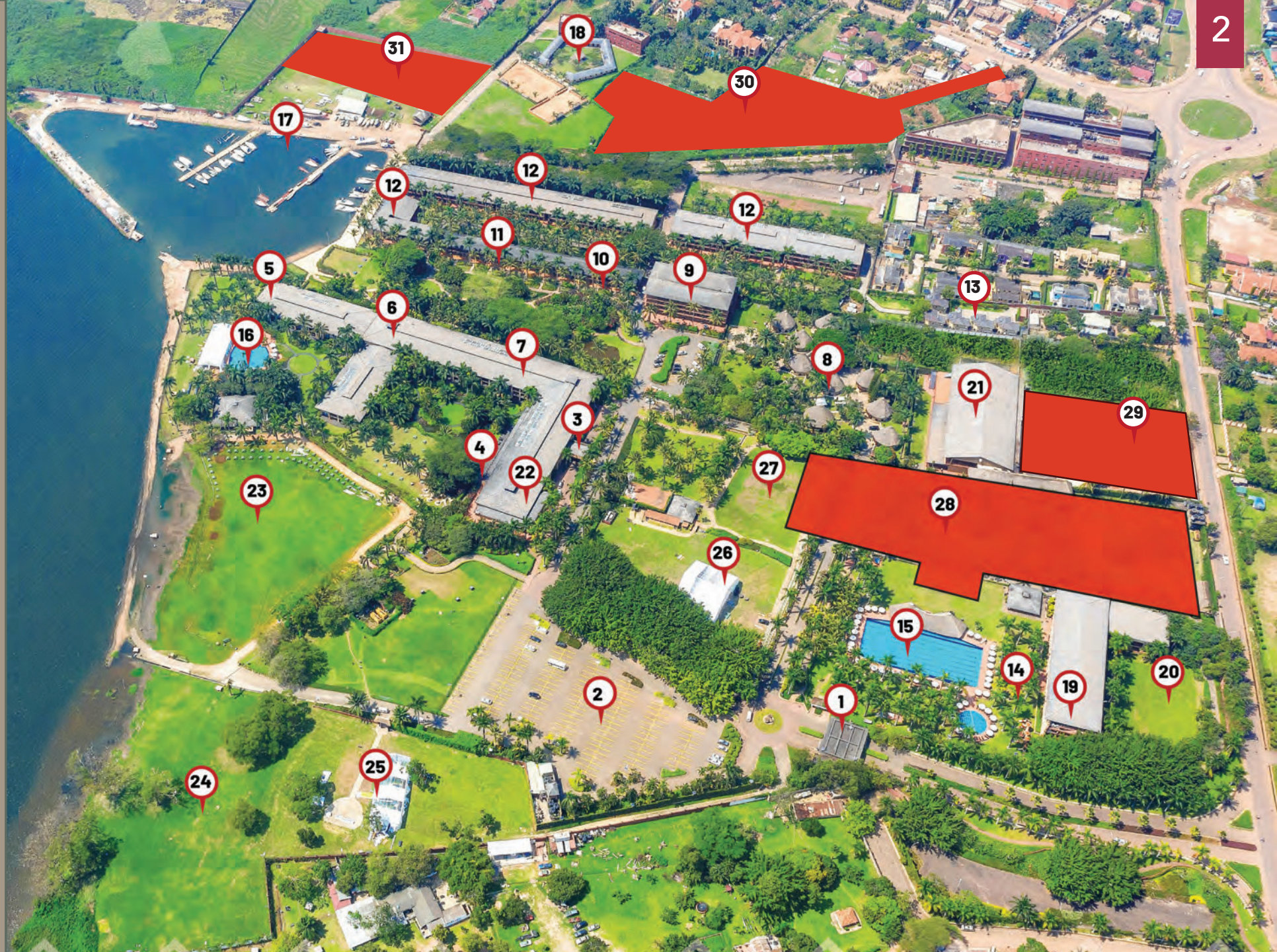


SPEKE
RESORT
CONVENTION
CENTRE



RESORT LAYOUT

1. Main Entrance
2. Main Car Park
3. Reception
4. Nyanja/ Lake Terrace Restaurant
5. Presidential Suites
6. Executive Suites
7. Executive Rooms
8. Presidential Cottages
9. Superior Rooms
10. Junior Suites
11. Studio Rooms
12. Deluxe Rooms
13. Garden Villas
14. Calabash Spa & Salon
15. Olympic Swimming Pool
16. Infinity Pool
17. Marina
18. Equestrian Centre
19. Speke Conference Centre
20. Speke Ballroom Gardens
21. Victoria Conference Centre
22. Commonwealth Banquet Hall
23. Lakeside
24. Lower Peace Hub
25. Upper Peace Hub
26. Flag Mast
27. Mango Green
28. Speke Resort Convention
29. Stores
30. Parking
31. Marina Gardens





GUEST ROOMS & SERVICES

GUEST ROOMS

Guest Rooms

Presidential Suites	59 (114 Executive Suites & Executive Rooms)
Presidential Cottages	10 (2 bedrooms)
Junior Suites	11
Superior Rooms	45 (24 inter-connecting)
Garden Villas	5 (2 bedrooms)
Studio Rooms	22
Deluxe Rooms	270
Total	477



SERVICES

Services:

24 hour In room dining
24 hour Duty Manager on call
24 hour laundry service
24 hour Concierge service
Golf cart shuttle service to venues and guest rooms

Doctor on Call:

Kindly contact Duty Manager Extension 2402 or +256 752 711 714

Nearest Hospital:

Mulago Hospital
Salama Road
Munyonyo

Nearest ATM:

Equity Bank ATM, Shell Fuel Station approximately 1.5 km from the resort

Safety Deposit Box:

A personal digital safe is provided in all the guest rooms.

Security:

Hotel Security and Uganda Police available on site 24 X 7.
Duty Manager: +256 752711714 or Extension 2402.
Security Manager: +256 752711793 or Extension 1317.
Fire & Safety Officer: +256 703798629 or Extension 1317.

FOOD & BEVERAGE

Food & Beverages

Sunset Restaurant and Terrace:

Offers cuisines from around the world and commanding views over the resort

Timings: 08h00 to 23h00

Nyanja & Lake Terrace:

Multi cuisine restaurant

Timings: 24 Hours

Viking Bar:

Serves snacks, tea, coffee and drinks

Timings: 11h00 to 23h00

Pool Side Restaurant:

Serves snacks, tea, coffee and drinks

Timings: 08h00 to 18h00

Victoria Restaurant:

Serves buffets, tea, coffee and drinks

Timings: 08h00 to 18h00

Lake Grill Restaurant:

Serves snacks, tea, coffee and drinks

Timings: Sundays and public holidays 12h00 to 20h00

V.V.I.P Kitchens:

Satellite kitchens and V.V.I.P dining rooms

Timings: Available 24 hours a day / 7 days a week



MEETINGS & CONFERENCES

MEETINGS ROOMS

CAPACITY CHART

VENUE	TOTAL SQUARE METERS	THEATER
INDOOR VENUES		
Speke Ballroom	1,140	1,400
Victoria Ballroom	957	1,000
Commonwealth Banquet Hall	332	250
Albert	600	500
Royal Palm	260	160
Sheena	242	175
Meera	242	175
Acacia	228	140
Ebony	228	140
Jacaranda	228	140
Mahogany	228	140
Majestic	126	95
Regal	126	95
Royal	126	95
Royal Club (Lounge setup)	107	
Kalangala	84	50
Emerald	73	22
Saphire	62	35
Amethyst	58	25
Sanga	34	24
OUTDOOR VENUES		
Lakeside	11,253	5,000
Lower Peacehub	11,000	5,000
Flagmast	4,240	2,500
Peachub Garden	2,268	1,000
Mango Garden	2,200	1,000
Munyonyo Commonwealth Poolside	2,106	400
Speke Ballroom Garden	1,935	400
Speke Resort Poolside	1,368	400
Marina Restaurant	340	120

SUPPORT FACILITIES

SUPPORT FACILITIES FOR CONFERENCES:

1. Satellite kitchen and V.V.I.P dining room
2. Accreditation centre
3. CCTV and security control room
4. Business centers
5. Translation services and equipment
6. Audio / video services and equipment
7. Video conferencing services and equipment
8. Public Address systems
9. LED screens
10. Event planning and management

SPEKE RESORT CONVENTION CENTRE



SPEKE
RESORT
CONVENTION
CENTRE

SPEKE RESORT CONVENTION CENTRE

OVERVIEW

The Speke Resort Convention Centre Munyonyo, an extraordinary 617,537-square-foot of flexible convention and meeting space, is equipped to handle events of all sizes, from small groups and break-out meetings to events for small, medium and large numbers of attendees.

An extremely energy-efficient building for its size, the Speke Resort Convention Centre includes a range of mixed-use exhibit spaces, 57,371 square meters of flexible meeting space with a total of 34 Multipurpose halls for meetings, events and exhibitions, as well as a 4000 square meter Convention Hall with a seating capacity of 3500 guests.

The Speke Resort Convention Centre also offers 36,910 square meters of open venues/gardens, 3000 square meters of fine dining space with a stunning panoramic view, multiple entrances and exits to accommodate safe access, and world class accommodation of 477 rooms, executive suites and presidential suites. This luxury, convenience and practicality is spread across 3 floors.

15,000

Square Meters of Flexible Meeting Space

4,000

Square Meters of Main Convention Hall

36,000

Square Meters of Open Venues / Gardens

6,000

Square Meters of Restaurant and Dining Space

477

Rooms and Suites

34

Versatile Meeting Rooms



R

ROOF



FF

FIRST FLOOR



UF

UPPER GROUND FLOOR



GF

GROUND FLOOR



LF

LOWER GROUND FLOOR



OTHER SERVICES

TYPES OF EVENTS



CONFERENCES



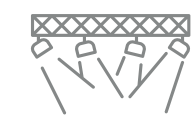
EXHIBITIONS



SUMMITS



WEDDINGS



CONCERTS

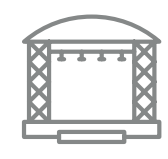


GALA DINNERS

SERVICES



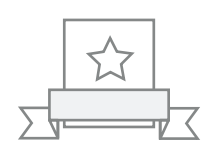
AV



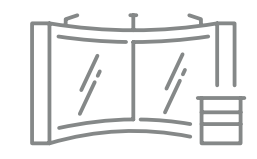
PRODUCTION



HOSPITALITY



VIP SERVICES



EVENT SERVICES



EVENT MANAGEMENT



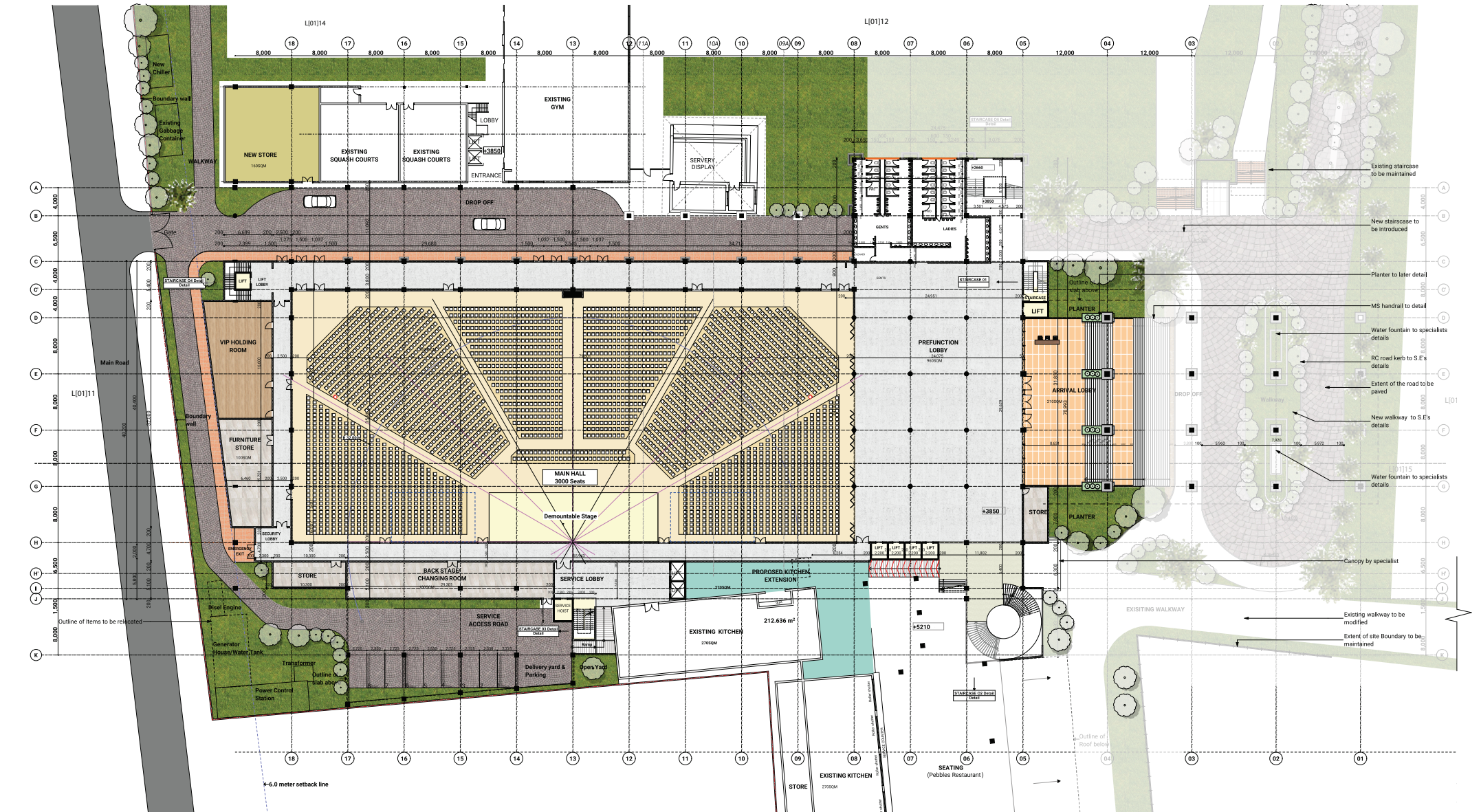
CATERING (EXCLUSIVE)

MEETING ROOMS

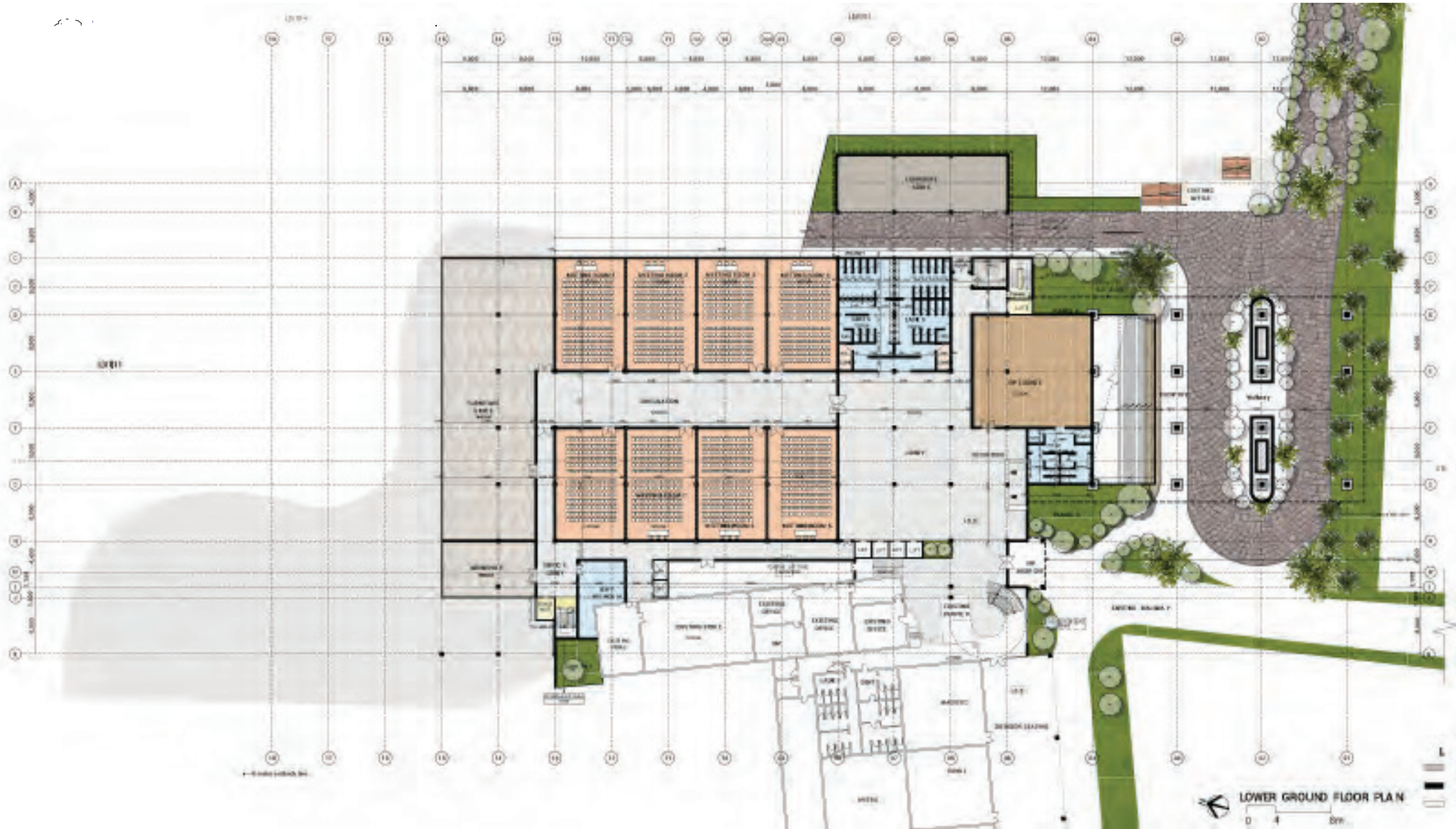
MEETING ROOMS

VENUE	SQM	CAPACITY
Rwenzori Convention Hall		
Rwenzori Main Hall	3,200	3,200
Gallery	800	800
Lower Ground Floor		
Murchison Hall	160	160
Kidepo Hall	160	160
Bunyonyi Hall	160	160
Bujagali Hall	160	160
Kibale Hall	160	160
Bwindi Hall	160	160
Mburo Hall	160	160
Semuliki Hall	160	160
First Floor		
Nalubaale Room	30	30
Kabalega Room	30	30
Katwe Room	30	30
Kyaninga Room	30	30

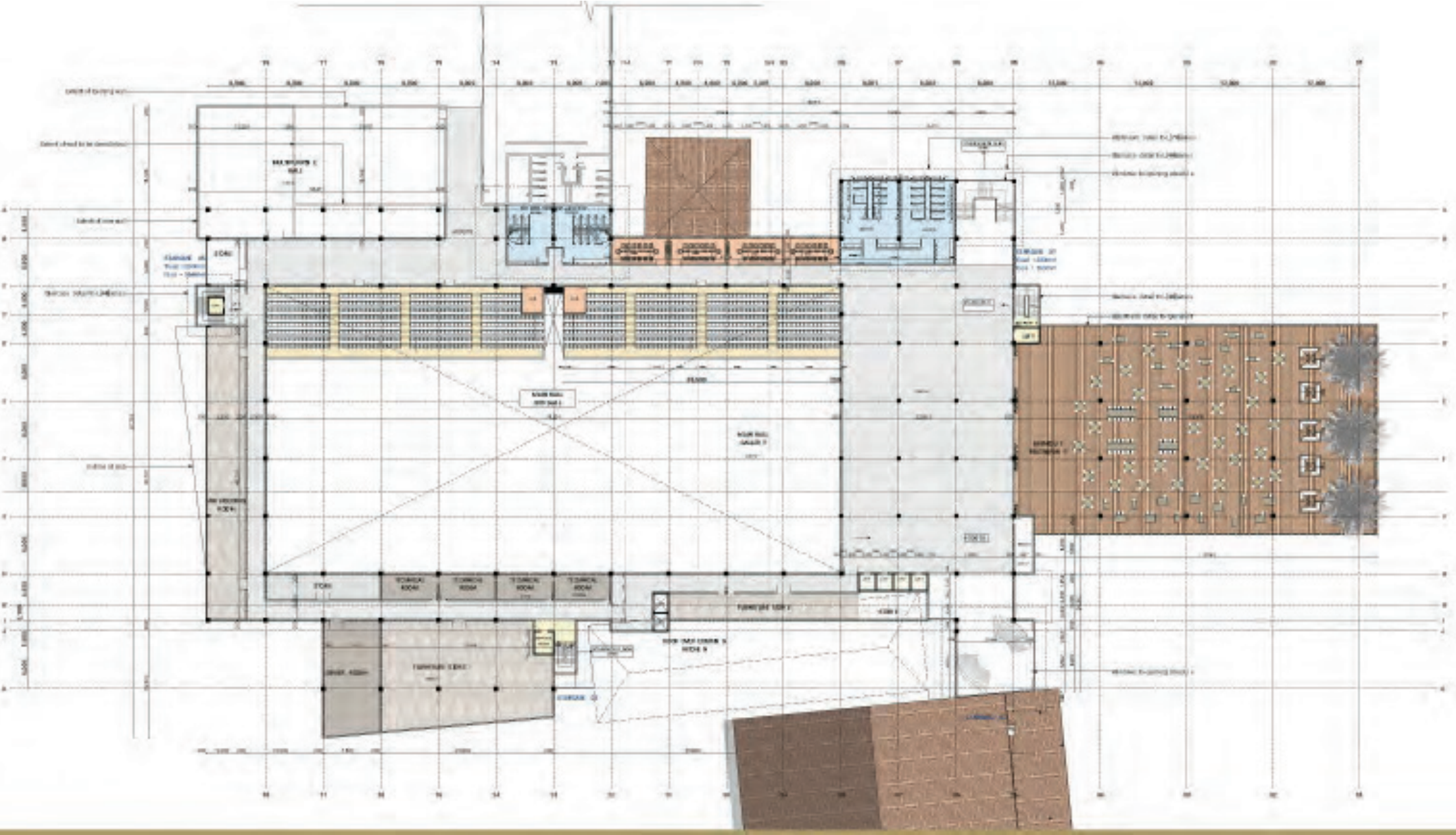
RWENZORI CONVENTION HALL SEATING & LAYOUT



LOWER GROUND FLOOR



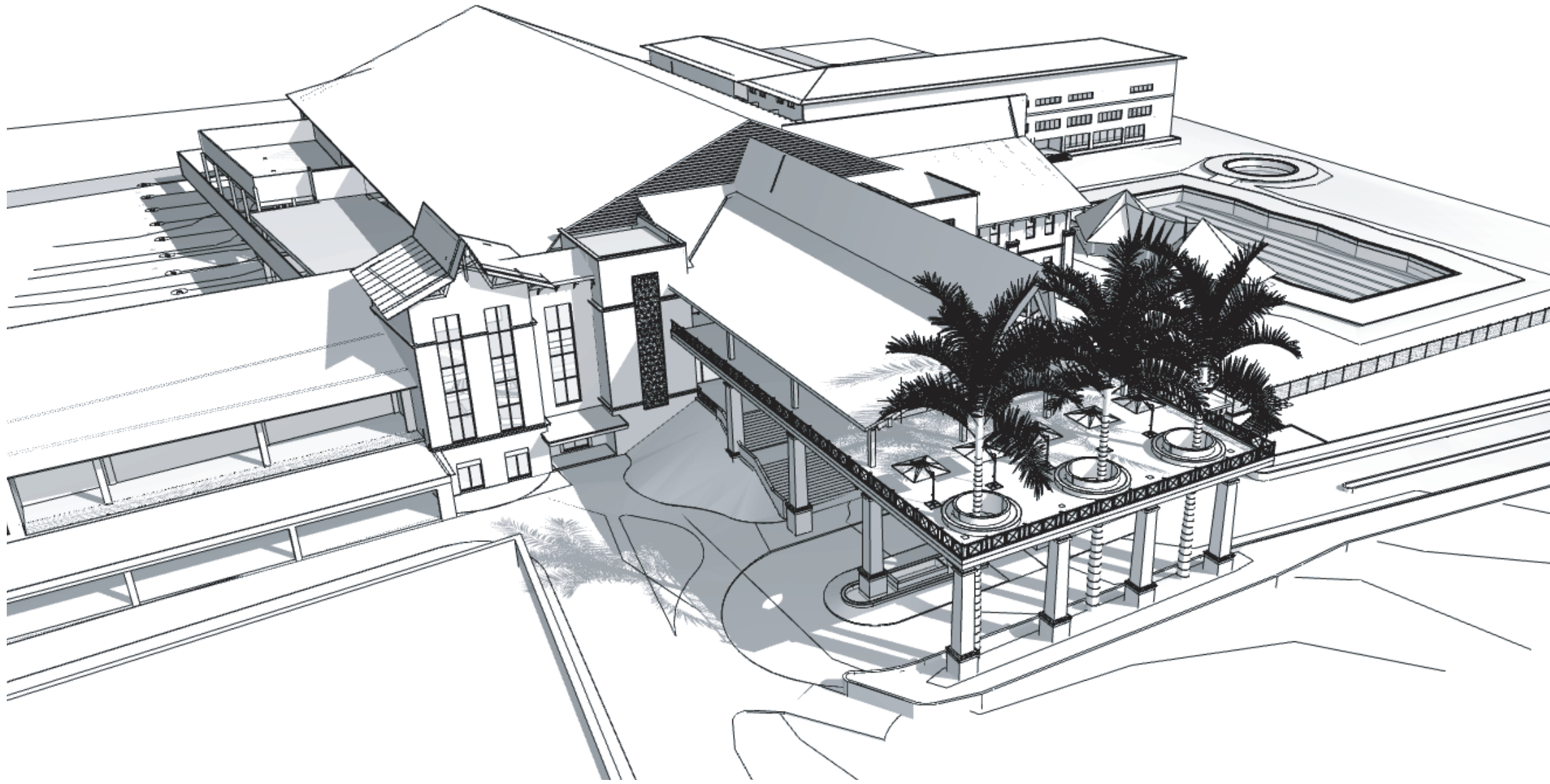
FIRST FLOOR



FACILITIES

SUPPORT FACILITIES

VENUE	SQM
Arrival & reception	210
Pre-function	960
Gallery pre-function lobby	1,020
VIP lounge & washrooms	340
Multipurpose hall	620
Workshop	100
Server room	120
Technical room	110
Control rooms	25
Furniture store	1,325
Other store	190
Washrooms	865
Circulation & services	9,072
Backstage & changing room	150
VIP holding & washroom	140
Breakout restaurant	1,560



SEATING PLANS











LESIURE FACILITES

LEISURE FACILITIES

Leisure Facilities

1. Olympic Size Swimming Pool
2. Health Club
3. Steam & Sauna
4. Equestrian Centre
5. Marina
6. Boat Trips
7. Fishing
8. Bird Watching
9. Calabash Spa and Salon
10. Infinity Pool



Thank You



Speke Resort
Munyonyo



SPEKE
RESORT
CONVENTION
CENTRE



MUNYONYO
COMMONWEALTH
RESORT LIMITED

Amit Sachdeva
Group GM Sales & Marketing
+256752711701
amit@spekegroup.com

Greg Petzer
General Manager
+256752711840
gm@spekeresort.com

Akhilesh Malik
Asst.General Manager
+256772777798
agm@spekeresort.com